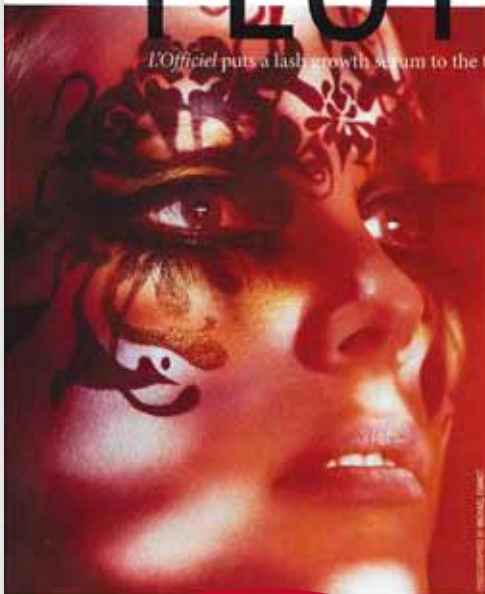




REPORT

FLITTER, FLUTTER

The Official puts a lash-growth serum to the test. Read on for the results. By Justina Tan



GET A WIGGLE
Three marvelous wands that conjure lovely lashes faster than you can say, "Engorgio!"



LASH AFFAIRS

More TLC tips from Dr. Jessica Wu, a dermatologist based in Los Angeles.

- Be gentle when removing mascara. Wipe down along the length of lashes, not across. The latter action may cause the strands to fall out. To remove waterproof eye makeup, L'Oréal suggests Biotherm Biocils Anti-Chute Eye Make-up Remover (\$42) as it strengthens and protects lashes.

- Guzzle green beans. Green beans, or French beans, are high in silicon, which helps to grow thicker and healthier hair.

After cleansing the face and removing contact lenses, place one drop of Latisse solution onto the tip of the disposable sterile applicator (hold it in a horizontal position). Glide the applicator from the inner to outer part of upper lash line, using a tissue to blot excess beyond eyelid margin. Repeat with a new applicator for the other eye.

During the two months, I didn't feel confident or comfortable to skip the mascara. Unfortunately, my lashes weren't as curly as I'd expected, although they looked definitely denser and darker, and maybe just a tad longer. And at \$256.80 per bottle (for a month's use), it is several times pricier than my favourite mascara.

Take note not to use Latisse on the lower lash line. It may lead to side effects such as temporary darkening of eyelid skin, permanent increase in brown pigmentation of the area, and itching or redness.

AVAILABLE AT THE SLOANE CLINIC, 3318 10th ORCHARD, SUITE 100, LOS ANGELES, CA 90024. TEL: 310-570-5100

Long, luscious lashes make your eyes look bigger and brighter. Little surprise then, many women have become obsessed with mascara and extensions. Those who prefer more long-lasting results, meanwhile, are growing their own, thanks to a slew of lash growth treatments. Like Latisse, the first prescription

treatment clinically proven to make upper lashes longer, thicker and darker within four months. The active ingredient here is bimatoprost. Originally used in eye drops to treat glaucoma, it peculiarly led to fuller, longer and curlier eyelashes. Bimatoprost contains a substance known as prostaglandin that extends the life cycle and volume of hair follicles, points out Dr. Jessica Wu, a Los Angeles-based dermatologist and principal investigator in clinical trials for Latisse. Here's how to apply it: After cleansing the face and removing

Long, luscious lashes make your eyes look bigger and brighter. Little surprise then, many women have become obsessed with mascara and extensions. Those who prefer more long-lasting results, meanwhile, are growing their own, thanks to a slew of lash growth treatments. Like Latisse, the first prescription



treatment clinically proven to make upper lashes longer, thicker and darker within four months. The active ingredient here is bimatoprost. Originally used in eye drops to treat glaucoma, it peculiarly led to fuller, longer and curlier eyelashes. Bimatoprost contains a substance known as prostaglandin that extends the life cycle and volume of hair follicles, points out Dr. Jessica Wu, a Los Angeles-based dermatologist and principal investigator in clinical trials for Latisse.

Here's how to apply it: After cleansing the face and removing contact lenses, place one drop of Latisse solution onto the tip of the disposable sterile applicator (hold it in a horizontal position). Glide the applicator from the inner to outer part of upper lash line, using a tissue to blot excess beyond eyelid margin. Repeat with a new applicator for the other eye.

During the two months, I didn't feel confident or comfortable to skip the mascara. Unfortunately, my lashes weren't as curly as I'd expected, although they looked definitely denser and darker, and maybe just a tad longer. And at \$256.80 per bottle (for a month's use), it is several times pricier than my favourite mascara.

Take note not to use Latisse on the lower lash line. It may lead to side effects such as temporary darkening of eyelid skin, permanent increase in brown pigmentation of the area, and itching or redness.

AVAILABLE AT THE SLOANE CLINIC, 3318 10th ORCHARD, TEL: 310-570-5100